



RECESSED TOUCH THERMOSTAT - TINTORETTO 230 - TE315VU ~

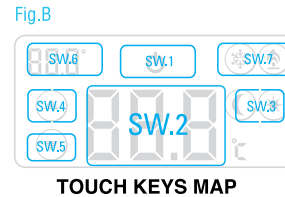
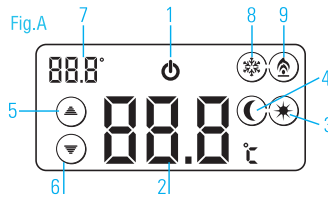
IN CONFORMITY WITH NORMATIVES
EN 60730-1, EN 60730-2-9



COMMAND AND INDICATIONS

KEYS / DISPLAY LEGEND Fig.A, Fig.B

- ON/OFF (SW.1)
- 88.8 Ambient temperature detected (SW.2)
- ☀ Comfort mode active (SW.3)
- ☾ Reduction mode active (SW.3)
- ▲ Increase value (SW.4)
- ▼ Decrease value (SW.5)
- 88.8 Set temperature (SW.6)
- ❄ Cooling mode (SW.7)
- 🔥 Heating mode (SW.7)



WARNINGS BEFORE INSTALLATION

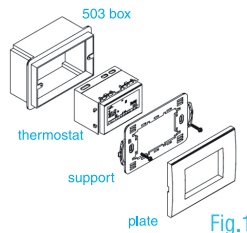
- The device must be installed by qualified personnel.
- The device must be positioned about 1.5 meters above the floor, avoiding heat sources, windows and doors.
- The device must be installed in three modules recessed boxes type 503E.
- Two interchangeable faceplates are supplied, white and charcoal gray. The white front panel is pre-installed. If you want to change the color, follow the procedure described in the paragraph "FRONT PANEL REPLACEMENT".
- Wiring diagram must be followed.
- Before making any changes to the settings, you must activate the device by pressing on the display. The backlight will light up and icons will appear. If you do not enter any command within 10 seconds the device will return to standby.

TECHNICAL SPECS

Power supply	230 Vac, 50-60 Hz
Relay type	1 changeover dry contact NO/NC
Max relay load	8(5)A - 250Vac
Temperature adjusting range	from +5 to +35°C
Thermal differential adjusting	± 0,1 - 1 °C
Sensor type	NTC - ±1%
Display type	Backlighted LCD display

INSTALLATION

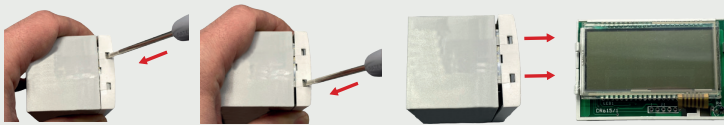
- Choose faceplates to use.
- Choose among the 4 universal supports supplied the one compatible with the plate in possession (SEE SUPPORT INSTRUCTIONS) and install the thermostat following the order indicated in Fig.1



FRONT PANEL REPLACEMENT

The device comes with a factory-installed white faceplate. To replace it with a different color, proceed as follows:

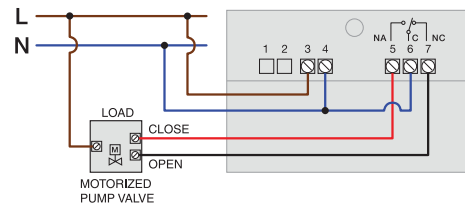
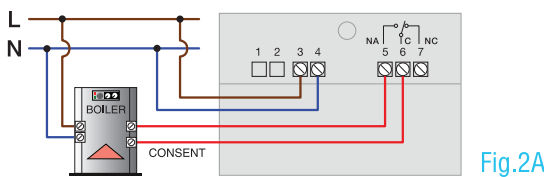
- Remove the faceplate from the device by lever with a flat head screwdriver into the two side slots and remove it from the device.



- Assemble the different colored faceplate, following the reverse procedure of the replacement procedure.

ELECTRICAL CONNECTIONS

Connect 230 Vac mains and the two wires of the heating / cooling system to the screw terminals on the back of the device following the diagrams in Fig. 2A e Fig. 2B



FACTORY SETTINGS

For quick and easy use, the thermostat is factory pre-configured in heating mode, with optimized settings for the user.

Preset temperature levels:

	HEATING MODE ☀	COOLING MODE ❄	Thermal differential 0.3°C
COMFORT *	22°C	24°C	
REDUCTION ☾	14°C	28°C	
	Activation of Frost protection function 5°C		

ON / OFF

Press the key ⏻ (SW.1) for 3 seconds to turn the device on/off. When the device is turned off it will appear ☐☐☐ top left.

DAY AND TIME SETTING

To change the desired temperature, use the touch keys ▲ (SW.4) or ▼ (SW.5). The adjustment range is from 2 to 35°C with steps of 0.1°C.

SETTING COMFORT ☀ / REDUCTION ☾ TEMPERATURE

- Press and hold on ambient temperature measured (SW.2) for 3 seconds
- Icons ☀☾ will appear
- Press the key ☀☾ (SW.3) to select the comfort ☀ or reduction ☾ temperature
- Use the keys ▲ (SW.4) or ▼ (SW.5) to adjust the comfort/reduction temperature
- Press the key ⏻ (SW.1) to exit programming

SETTING HEATING ☀ / COOLING ❄ MODE

- Press and hold on ambient temperature measured (SW.2) for 3 seconds
- Icons ☀☾ will appear
- Press the key ☀☾ (SW.7) to select the heating ☀ or cooling ❄ mode
- Press the key ⏻ (SW.1) to exit programming

THERMAL DIFFERENTIAL REGULATION dT

- Press simultaneously for 3 seconds on the set temperature (SW.6) and ambient temperature measured (SW.2)
- dT appears
- Press the keys ▲ (SW.4) or ▼ (SW.5) to adjust the thermal differential
- Wait 10 seconds to return to the main screen

LOCK SETTING

- Press simultaneously for 3 seconds on the set temperature (SW.6) and ☀☾ (SW.3)
- b1c appears
- To unlock the device press for 3 seconds b1c

RESET

Press the keys at the same time ⏻ (SW.1) and ▼ (SW.5) for 3 seconds. The device will restart to factory settings.

