



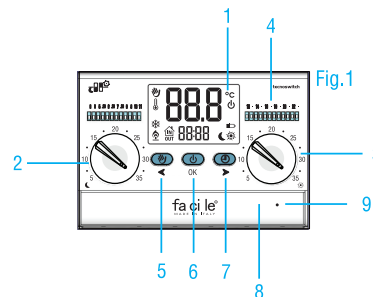
WALL MOUNTED DAILY PROGRAMMABLE THERMOSTAT - CR135BI fa ci le®

CONFORME ALLE NORME
IN CONFORMITY WITH NORMATIVES
EN60730 - 1; EN60730-2-9



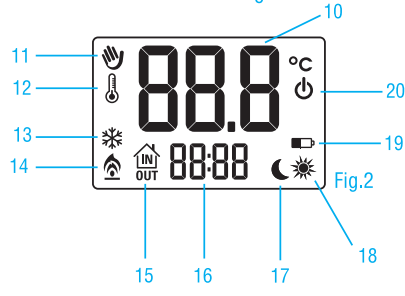
LEGEND Fig.1

1. LCD display with white back-lighting.
2. ☾ Knob to set the Reduction temperature.
3. ☼ Knob to set the Comfort temperature.
4. Switches for setting comfort / economy mode.
5. ⌂ Multifunction key: Manual / left key.
6. ⏻ ON - OFF / OK key.
7. ⌂ Multifunction key: External probe temperature if present / clock settings Advanced Menu / Right Key
8. Battery holder.
9. Reset hardware.



DISPLAY LEGEND Fig.2

10. 88.8 °C Room/Out door Temperature.
11. ⌂ Manual Mode.
12. ❄ Frost protection.
13. ❄ COOLING mode.
14. ☼ HEATING mode.
15. ⌂ ON/OFF external probe.
16. 88:88 Time.
17. ☾ Reduction mode.
18. ☼ Comfort mode.
19. 🔋 Low batteries.
20. ⏻ OFF.



INSTALLATION

The device must be positioned about 1.5 meters from the floor, far away heat sources, windows and doors. Make sure that the batteries are not present during installation. To install the programmable thermostat it is necessary:

- Unhook the base from the thermostat using a flathead screwdriver on the hole. Fig.1A
- Fix the base of the timer thermostat to the wall. Fig.2A
- Connect the two wires of the Heating or Cooling system to the screw terminals. See Fig.1B-2B-3A

Fig.1B

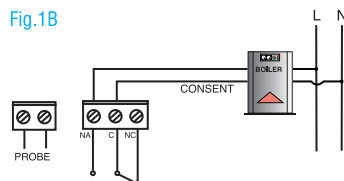
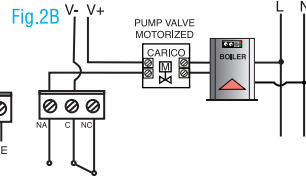


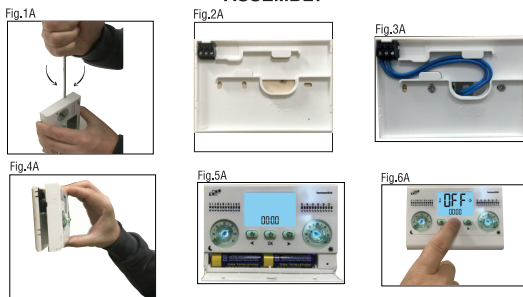
Fig.2B



The electrical wiring depends on the solenoid valve used.

- Hook the lid of the device to the base fixed it to the wall. Fig.4A
- Open the battery compartment. Insert n. 2x1.5V AA alkaline batteries, respecting the polarities indicated on the bottom. Fig.5A

ASSEMBLY



ATTENTION: Inserting the batteries incorrectly could damage the appliance.

After having inserted the two batteries correctly, the display will appear in sequence: the display icons, firmware code, set time.

To set the time: use < or > to set the hour → confirm with OK → use < or > to set the minutes → confirm with OK.

After set time the timer thermostat start in OFF state with default settings.

Note: If the batteries are low the battery symbol 🔋 will appear.



FACTORY SETTINGS

- Heating Mode ☼
- Automatic mode
- Frost protection ❄ 5 °C
- Thermal differential 0,3 °C
- Operation with internal probe

ON / OFF

Press ⏻ to turn ON/OFF the system. Fig.6A

SET TIME

Press the button ⌂ for 3 second. Once the button is released the clock flashes → use < or > to set the hours → confirm with OK → use < or > to set the minutes → confirm with OK.

MANUAL / AUTOMATIC MODE OPERATION

The icon ⌂ on the display indicates Manual mode operation is active

- If ⌂ icon is absent, press the button ⌂ to go to manual mode.
- Icons ⌂ and ☼ appear on the display.
- Set the desired temperature using the comfort temperature knob ☼.

If ⌂ icon is active, press the button ⌂ to go to automatic mode.

- Set the Comfort temperature using the right knob ☼.
- Set the Reduction temperature using the left knob ☾.
- Move the switches upwards to activate the system with comfort temperature ☼; downwards to activate the system with reduction temperature ☾.

When the system starts operating, the icon ☼ / ❄ will be animated.

SET HEATING / COOLING

Press the button ⌂ for 10 seconds until the editable icons appear on the display → use < or > and select the icon ☼ → confirm with OK → Use < or > to select the Heating ☼ or Cooling ❄ mode → confirm with OK.

To exit from advanced menu use < or > and select Esc → confirm with OK. When the system is active, the icon ☼ / ❄ is animated.

SOFTWARE RESET

Press the button ⌂ for 10 seconds until the editable icons appear on the display → use < or > and select the icon dFLt → confirm with OK → rSt appears → confirm with OK.

HARDWARE RESET

Press the reset button on the right side of the battery compartment.

For more information consult the installer manual on our website (tecno**switch**.com).

Pursuant to Legislative Decree No. 49 of March 14, 2014 'Implementation of Directive 2012/19 / EU on waste electrical and electronic equipment (WEEE)' The 'crossed out wheeled bin' WEEE symbol on the appliance show that the product at the end of its useful life must be collected separately from other waste. Therefore, the user must provide the equipment with the essential components at the recycling centre for electronic and electrotechnical devices or return it to the dealer when you purchase an equivalent appliance in one to one reason, or 1 to zero for equipment with a side lower than 25cm. The correct recycling helps to avoid possible negative effects on the environment and on health favoring the recycling of the materials that make up the equipment. The illegal disposal of the product by the user involves administrative sanctions as per Legislative Decree No. 49 of March 14, 2014.



REV. 51-19